



Project name:		Type
Catalog number:		
Location:		
Date:		
Comments:		

MINI-S-PP-FC

ORDERING INFORMATION

Product Code	Description	Color	Part Number
MINI-S-PP-FC	MINI secondary sensor for use with any PP power packs (requires primary sensor on same power pack)	white	97183



„Size comparison“

DESCRIPTION

Small size, big results! At less than 2' in diameter, the MINI outperforms other 360°, ceiling mounted sensors that are over 5 times its size! And the MINI virtually disappears after it is mounted! Superior passive infrared (PIR) motion detection, an integrated photocell as a standard feature (primary sensor only) and a small easy-to-mount profile makes the MINI perfect for almost any application. Designed for easy integration with the B.E.G. PP series power packs, the MINI-S secondary sensor simply connects to the power pack using a standard RJ12 jack along with the MINI-P primary sensor to expand the motion detection coverage. All of the settings of the MINI can be remotely adjusted via the primary sensor using our iOS or Android smartphone app.

TOP FEATURES

- The smallest, full feature, ceiling mount sensor on the market
- Spring clips for quick and easy installation in suspended ceilings and light fixtures
- Can be used as both an occupancy and vacancy sensor
- Trim rings are removable for field painting! Accessory rings are offered in several popular colors and in two different sizes

OPERATION

The MINI-P with B.E.G. PP-A power pack detects both motion and the ambient light level in the room and then automates the lights according to the parameters set by the building management. The MINI-S extends the motion detection coverage of the system. The integrated light sensor in the MINI-P constantly measures the ambient light and if the light level is sufficient, the light will be switched off. If the ambient light level is below the brightness level the lights will be allowed to come on when the sensors detect movement in the room. When motion is detected in the room the PP-A's auxiliary dry contact relay will send a signal to HVAC or other systems indicating that the room is occupied. With the integration of simple off the shelf, momentary switches the MINI/PP-A can be used as a vacancy sensor or the switches can be used to turn off the lighting before the preset time out period.

APPLICATIONS

- **Indoor:**
 - Private and Open Offices
 - Conference Rooms
 - School/University Classrooms
 - Corridors
 - Healthcare and Laboratory Spaces
- Vacancy (Manual) operation is achieved by combining the MINI primary sensor, MINI-S-PP-FC, and PP power pack with a low voltage momentary contact switch. For high mounting applications please refer to MINI-S-PP-GH-FC, part number 97187. For outdoor and wet location applications please refer to MINI-S-PP-W-FC, part number 97193.

PRODUCT INFORMATION

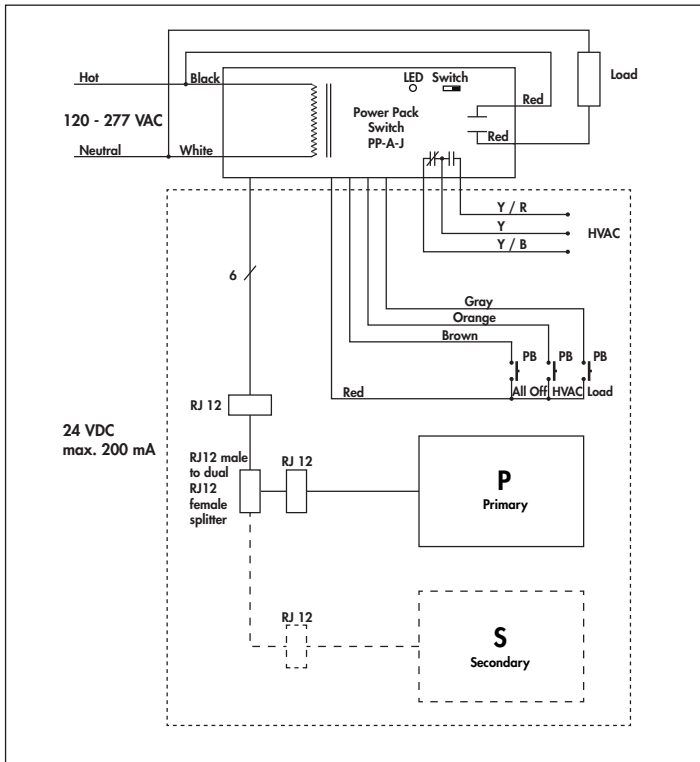
- One MINI primary sensor is required on the same power pack for the MINI-S-PP-FC to function. Refer to tech sheets for part numbers 97180, 97181, 97182 and the appropriate power pack.
- Designed for indoor and dry locations only.
- Works with the B.E.G. PP series power packs or proprietary low voltage system
- Up to 4 Secondary sensors may be connected with a primary sensor to increase motion detection coverage. 2-way male to female RJ-12 splitter included.
- Spring clips for quick and easy installation in suspended ceilings and light fixtures
- 5 years limited warranty
- Masking blinds included
- Programmable features cannot be adjusted via the secondary sensors, only the primary sensor.
- ROHS and REACH compliant
- Trim rings are removable for field painting. Use paints suitable for polyethylene plastic. Accessory rings are offered in several popular colors and in two different sizes. Please see accessory ordering information for options.

TECHNICAL DETAILS

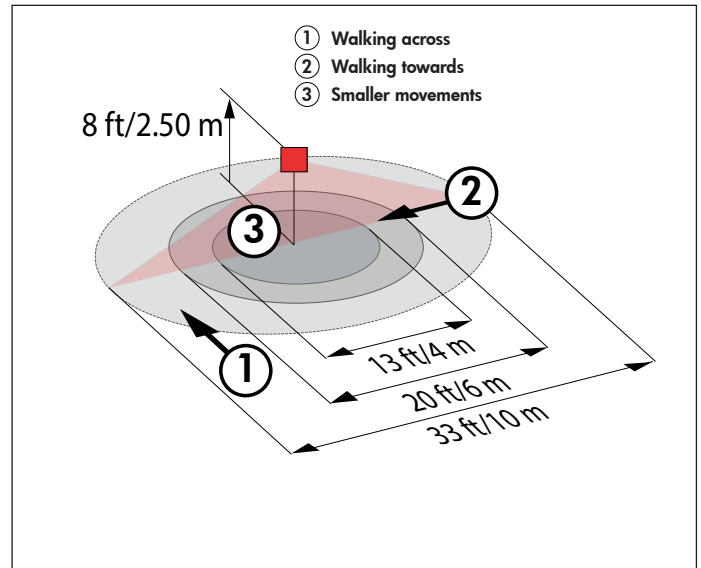
Power supply:	24 V DC from B.E.G. Controls Power Pack PP-1-J or PP-A-J, or compatible power supply by others. Please contact B.E.G. Controls to confirm compatibility with power supplies by others.
Power consumption:	1 W
Detection range:	Ø 33 ft / 10 m across Ø 20 ft / 6 m towards Ø 13 ft / 4 m seated
Recommended Mounting Height:	8.2 ft / 2.5 m
Dimensions sensor:	Ø 1.4 x 1.1 in / 36 x 28 mm
Operating temperature:	-13 °F to 122 °F / -25 °C to +50 °C
Housing:	UV- and shock resistant 5VA material

Cable length:	9.8 ft / 300 cm
Compliances:	ETL listed for the U.S. and Canada (UL STD 60730-1 and CSA STD E60730-1). UL 2043 plenum rated.

WIRING DIAGRAM

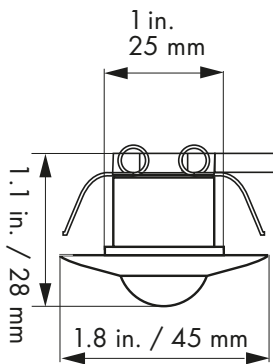


RANGE DIAGRAM



- ① Walking across
- ② Walking towards
- ③ Seated activity

DIMENSIONS DRAWING



Note: Product specifications are subject to change without notice.
Please consult the B.E.G. Controls web site for the most recent product specifications.