



Project name:		Type
Catalog number:		
Location:		
Date:		
Comments:		

PD2N(CIRCLE)-LTMS-RR-FC

ORDERING INFORMATION

Product Code	Description	Color	Part Number
PD2N-LTMS-RR-FC	PIR motion/daylight/temp sensor, Recessed, Indoor, 12v-48v DC	white	92119
IR-Adapter for Smartphones	IR-Adapter for Smartphones (phone by others) to enable use of Smartphone Remote Control App	black	92726
IR-LTMS	Hand-held IR Remote Control	white	92185
BSK-PD	Protective wire guard/basket for CIRCLE/CONNECT	white	92199



FC

DESCRIPTION

The PD2N-LTMS delivers superior 360-degree detection coverage and excellent range. The combination of passive Infrared (PIR) motion detection, photosensor and temperature sensor provides an all-in-one occupancy data collection solution. The recessed design of the PD2N-LTMS reduces the ceiling profile of the sensor to achieve a balance between aesthetics and performance. The PD2N-LTMS is designed for use in OEM applications as a component in proprietary control systems by others to detect motion and report occupancy status, ambient light level, and temperature in a space. Power supply and control intelligence are supplied by the proprietary control system.

TOP FEATURES

- Low voltage multi sensor with 360° detection coverage
- Integral photosensor and temperature sensor
- Reports occupancy, brightness, and temperature status to OEM proprietary control systems by others
- 12v-48v DC operating voltage
- Low current/low noise Reed Relay for outputting occupied status
- Spring clips for quick and easy installation in suspended ceilings
- Self-test upon power up
- Full range of settings can be remotely adjusted using our Android or iOS smartphone apps.
- Plenum rated

OPERATION

The PD2N-LTMS detects motion, the ambient light level, and the temperature in the room and reports the status to the OEM proprietary control system. The occupancy status is reported via closure of the dry contact Reed Relay, and the brightness and temperature values are reported as an analog voltage. Mechanical adjustment is provided to fine tune the ambient light and temperature outputs. The full range of settings of the PD2N-LTMS are remotely adjusted using our iOS or Android smartphone app. Please refer to the installation instruction/manual for a detailed description of functions and operation.

APPLICATIONS

Indoor:

- Private and Open Offices
- Conference Rooms
- School/University Classrooms
- Corridors
- Healthcare and Laboratory Spaces

Control Systems:

- Lighting Control
- Audio-Visual
- Fire Alarm
- HVAC
- Building Management-Systems
- Security
- Home Automation

PRODUCT INFORMATION

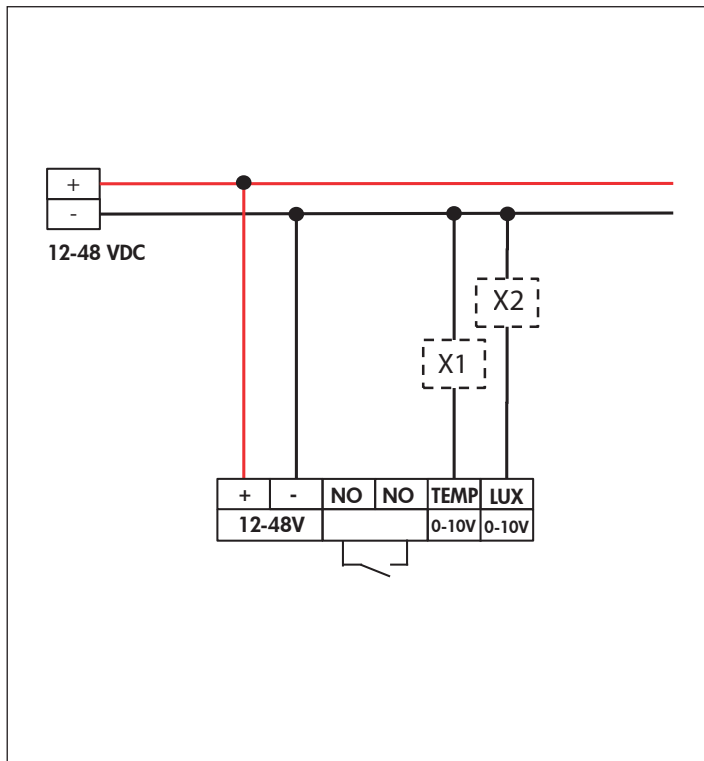
- Designed for indoor use and dry locations only
- Low voltage Passive Infrared (PIR) motion sensor
- Photosensor and temperature sensor included as a standard feature
- 12v-48V DC operating voltage
- Occupied status reported via dry contact closure of low current/low noise Reed Relay
- Ambient light level and temperature reported via analog voltage
- Reduced ceiling profile
- Self-test upon power up
- LED indicators for operation feedback and troubleshooting
- Mechanical fine adjustment of ambient light and temperature measurement outputs
- All programmable features are adjusted using our free Android and iOS smartphone apps (requires IR-ADAPTER, part no. 92726 sold separately)
- Wire terminals accept 16-24 AWG solid copper wire.
- Spring clips for quick and easy installation in suspended ceilings
- Masking blinds included to limit degree of motion detection coverage
- 5 years limited warranty
- ROHS and REACH compliant
- Plenum rated (UL 2043)

TECHNICAL DETAILS

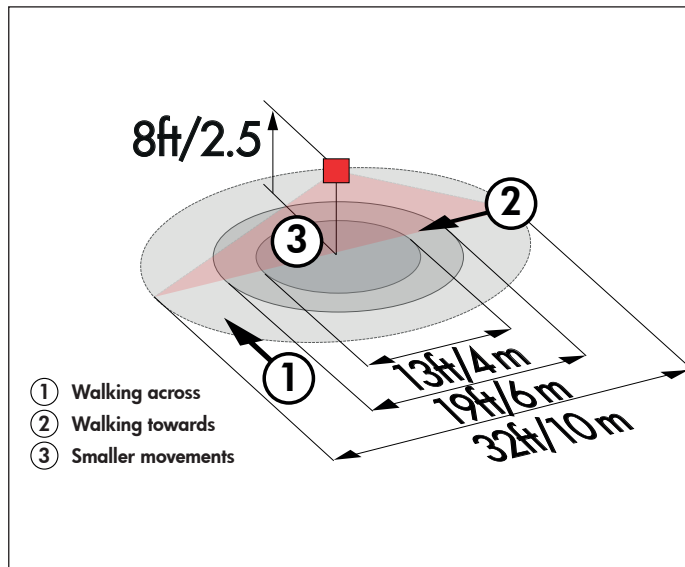
Operating voltage:	12 - 48 V DC
Power consumption:	< 1 W
Detection area:	360°
Detection range:	max. Ø 33 ft / 10 m across max. Ø 20 ft / 6 m towards max. Ø 13 ft / 4 m small movements
Recommended height for mounting:	8 ft / 2.5 m

Temperature output:	32 °F to 122 °F / 0 °C to +50 °C, 0-10 V, 10 mA
Operating temperature:	32 °F to +122 °F / 0 °C to +50 °C
Housing:	Polycarbonate, UV-resistant, UL 94 V-0
Remote controllable:	IR-Adapter with Smartphone App (Android / iOS)
Relay channel 1	
Switching power:	max. 0,1 A / 0 - 48 V DC
Contact:	potential free contact type NO
Follow-up time:	15 s - 30 min
Switch-on threshold:	0 to 186 fc / 0 - 1000 Lux

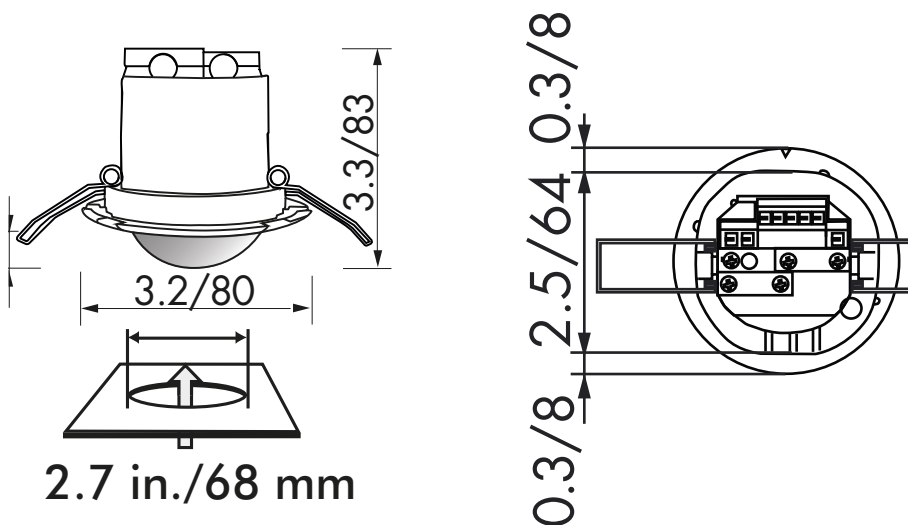
WIRING DIAGRAM



RANGE DIAGRAM



DIMENSIONS DRAWING



Note: Product specifications are subject to change without notice.
Please consult the B.E.G. Controls web site for the most recent product specifications.